

FALL ISSUE 2012



www.socsc.hku.hk

Socien**t**ist 社 科人

**Restricting Charcoal to
Reduce Suicide Rates**

Community Impact

**Green Roofs to
Conserve Energy**

香港大學社會科學學院

FACULTY OF SOCIAL SCIENCES · THE UNIVERSITY OF HONG KONG



Community Impact

INTRODUCTION

In the social sciences at The University of Hong Kong we rely in part on impact of our research. We use metrics such as impact factors, citations. These measures and other factors have paved the way for the Faculty of

Less certain, however, is the non-academic impact and measurement of government officials, businessmen, alumni and potential donors require the lives of Hong Kongers. We must demonstrate the relevance of our work inside and outside the University.

Understanding Non-Academic Impact

According to a LSE Public Policy Group study, impact implies 'recorded or auditable occasions of influence', that are, however, not the same as outputs or activities or outcomes, and that do not depend for their existence on some kind of social welfare gain (LSE, 2011: 5). The Hong Kong Research Grants Council's (RGC) support for public policy research is specifically designed to fund research that aims at this kind of impact. Measuring impact, however, is difficult in the humanities and social sciences. As my colleague, Professor Joseph Chan Cho-wai, (Department of Politics and Public Administration) has pointed out, 'Those of us working in the humanities and social sciences influence people chiefly through the medium of ideas, not through technology or practical skills (saving lives in medicine, or building bridges in civil engineering). Ideational impact is not only difficult to measure, but also *difficult to occur*. Impact depends to a great extent on how ideas are transmitted and whether people at the receiving end are persuaded. This depends on the relative power of non-ideational factors such as interests, power, and access to information, and people's open-mindedness. If our research fails to influence people in society, does it imply that our research has no practical value? Policy research or academic research *could* add immense practical value to society even if the impact is not clearly visible. Simply stated, the impact of ideas is determined by many factors outside of the control of the researcher. On the contrary, scientists, engineers, and doctors often have direct control over

the subject/material they work on. 'Direct and clear impact' (E-m Davies et al caution: '... much more diffuse and characterized by generalizations and ideological deliberation... Thus research choices, but also to the formation of understandings and possibilities in professional discourse and

These cautions are well taken. First, we can infer indirect records of our colleagues' impact by directly advising of lectures, networking joint publications and co-edited books. It should also be noted (LSE, 2011) that impact through a variety of channels:

- Discussions of our research in *media* (including print, radio, television, specialist *media* such as public policy journals)



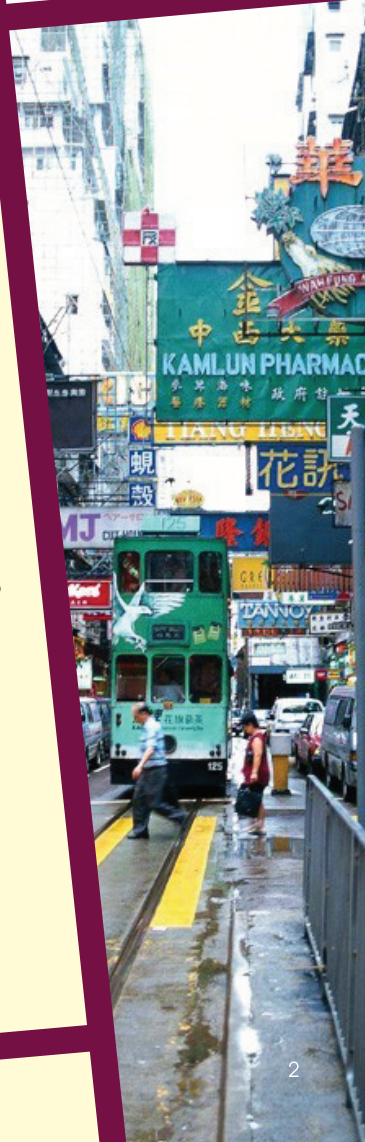
... peer review and metrics in order to be certain of the academic
 ... counts, acceptance rates and the prestige of academic presses.
 ... of Social Sciences to be ranked 23rd in the world by QS.
 ... of social sciences research. Members of the public, politicians,
 ... re evidence of our impact on the development of Hong Kong and
 ... research since we depend on the good will and support from both

... k on, and hence they can create
 ... ail, 14 September 2012). And as
 ... ch important decision making is
 ... 'non-decisional processes'...When
 ... ovides a background of empirical
 ... eas that creep into policy
 ... can contribute not just to decisional
 ... ormation of values, the creation of
 ... ities, and to the quality of public and
 ... debate' (Davies, et al, 2005, 12).

- professionals, think tanks, consultancies, trade unions, charities and NGOs;
- Debates and proceedings of Legislative Council and its Panels;
- Papers, publications and website coverage of research by the government;
- Financial data available within the university indicating the scope of our activities outside the university such as research grants, consultancies, contracts, licensing income, payments made for training sessions, conferences and so forth; and
- Participation and/or visits by members of the public, business, government, and civil society to Department/Faculty activities indicating that these external actors found (or anticipated finding) something of value. 'The more senior these personnel are, the greater the imputed external value of what the department or lab is providing...' (LSE, 226). Logging the contacts and providing these participants with opportunities to feed back on their experience would be valuable evidence.

The impact of non-academic research focuses on many areas. Faculties of social sciences largely provide research that relates to public policy. Our Faculty of Social Sciences is no exception.

... search that appear in the *general*
 ... nt, radio and TV, internet and blogs) and
 ... h as the trade press, industry journals,
 ... ls and magazines, newsletters of





Tracking Impact on Public Policy

We can identify two general approaches to demonstrate the impact of research on public policy in Hong Kong: forward tracking ('producer-push') and backward tracking ('user-pull') (Davies, et al, 2005, 12). Forward tracking (perhaps augmented with user panels) asserts that a particular piece of research has been examined, taken up, incorporated into, or determined a particular public policy. We may understand the RGC's public policy research grants in this light. Under this scheme the government, through the Central Policy Unit (CPU), identifies some general policy areas of interest to the community, and encourages researchers in Hong Kong to submit proposals to a vetting panel in order to solve these public problems. The extent to which the proposals are likely to have an impact on public policy is one of many considerations for funding. In some cases (e.g., strategic public policy research) the proposals are circulated directly to concerned government agencies as part of the vetting process for determination of relevance. When the projects are completed, summaries of the results are published in a newsletter that is distributed to public bodies, including government. Whether government agencies take up these policy ideas is unclear.

Backward tracking involves examining policy decisions or practices to identify research-based influences. We can understand the government's need for public policy research by examining the contract research undertaken by members of our faculty. Tracking backwards can identify the policies on which the government sought research help from the University. The chain of influence can be identified through interviews with the commissioned government agency and with the researcher.

What We Are doing

Members of the Faculty have been elected to the Legislative Council (Dr Law Chi Kong and Dr Yeung Sum) where they influenced public policy, especially in the provision of social welfare and the furtherance of political reform. Members have also been seconded to the HKSAR Government's Central Policy

Unit (Professor John Bacon) or have been advisors to or Simon Zhao Xiaobin, Dr Ng Consultancies to the CP evaluating public support Nelson Chow Wing-sun, F Joe Leung Cho-bun, Profes Chan Lai-wan. They have the Chief Executive's Policy cross border relations with members of the Faculty into advisory committees.

Eight colleagues from the policy grants from the Res results. Public policy reco been provided in the last t colleagues from Geograp Kong as logistics hub in Sociology (Professor Lui Tai in Hong Kong, 2009; Profe networks of professional m Chou Kee Lee, integration 2010; Dr Edward Chan K Kong, 2010; Dr Ernest Ch services for the elderly, 20 processes on public v (See <http://www.ugc.edu.hk> for write-ups of the impac *Policy Digest*).

Finally, the Faculty is a ma government agencies in H According to the partial Section, in 2011/12 memb 57 contract research proje (but also for organization Taiwan). Of these the Ce largest number (9), followe (4). The Faculty's Socia Department held most of contract research for the E

Shone, Dr Peter Cheung Tsan-yin
part-time members of the CPU (Dr
Cho Nam, Dr Richard Hu Weixing).
identifying policy options and
; have been provided by Professor
Professor Paul Yip Siu-fai, Professor
Professor Lui Tai Lok and Professor Cecilia
advised on everything from drafting
Address to handling Hong Kong's
Guangdong province. In addition,
fluence and serve on many different

Mortgage Corporation, the Hong Kong Mandatory Provident Fund, public hospitals in Hong Kong, the Housing Society, the Productivity Council, the Airport Authority, MTRC, the Office of the Telecommunications Authority, and the Leisure and Cultural Services Department. In addition to SWSA, colleagues in Geography, Sociology, and the Social Sciences Research Centre were actively engaged in public policy related contract research, indicative of the Faculty's non-academic impact.

Professor John P Burns Dean

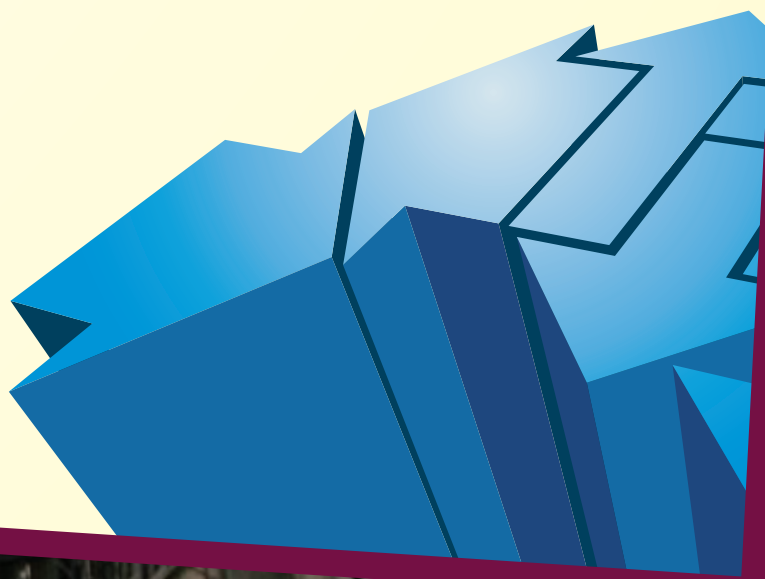
References

Davies, Huw, Sandra Nutley, Isabel Walter (2005), 'Assessing the Impact of Social Science Research: Conceptual, Methodological and Practical Issues' (A background discussion paper for the ESRC Symposium on Assessing Non-Academic Impact of Research, Research Unit for Research Utilization, School of Management, University of St Andrews, May) (online at: http://www.odi.org.uk/rapid/Events/ESRC/docs/background_paper.pdf, accessed 13 August 2012).

LSE Public Policy Group (2011), 'Maximizing the Impacts of your Research: A Handbook for Social Scientists' (online at: http://www2.lse.ac.uk/government/research/resgroups/LSEPublicPolicy/Docs/LSE_Impact_Handbook_April_2011.pdf, accessed 13 August 2012).

Faculty have won competitive public
Research Grants Council with published
recommendations for government have
three years, through these grants by
phy (Dr James Wang Jixian, Hong
the global value chain, 2009);
Lok, life chances and social mobility
Professor Wong Siu Lun , locating HK in
migrants, 2011); and Social Work (Dr
of new immigrants to Hong Kong,
Ko-ling, domestic violence in Hong
Lui Wing-tak, integrated home care
2011; Dr Law Chi Kong, consultation
works projects in HK, 2011).
nk/eng/rgc/publication/ppd/ppd.htm
ct of their work in the RGC's Public

major supplier of contract research to
Hong Kong and on the Mainland.
data of HKU's Research Services
members of the Faculty were engaged in
acts, mostly conducted in Hong Kong
ons on the Mainland, Macau, and
ntral Policy Unit commissioned the
ed by the Social Welfare Department
l Work and Social Administration
these contracts. We also provided
Elderly Commission, the Hong Kong





Case Studies of Impact

Green Roofs to Conserve Energy

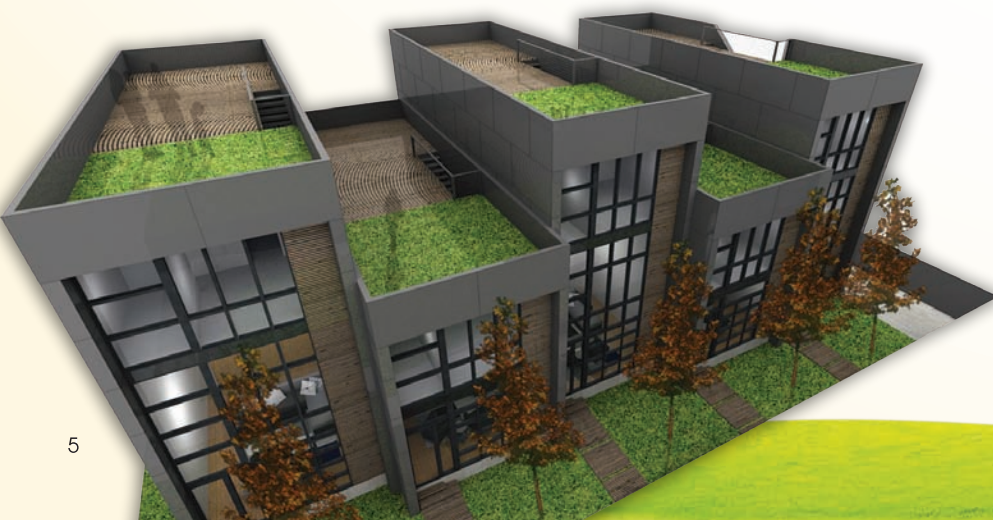


The green roof and associated green wall (vertical greening) research projects were initiated in 2006 and sustained by generous donations and grants. Thus far, eight field experiments have been established: (a) a green roof on the University's Runme Shaw Building; (b) a green wall on the Runme Shaw Building; (c) a native woodland on the CLP substation in Lai Chi Kok; (d) a large-scale public building site on the Tai Po Railway Station; (e) a public housing-estate site at Tseung Kwan O; (f) a large-scale plant species trial site on the University's Library Building; (g) a setup to evaluate hydrological benefits on the Library Building; and (h) a large-scale green wall combining environmental assessment and species trial at the Drainage Services Department's Shatin site. These experiments are well equipped with state-of-the-art environmental monitoring sensors and data loggers to acquire long-term data related to microclimatic, thermal, energy and hydrological performance.

The experimental study has been extended to territory-wide assessments based on remote sensing

images, geographic information systems, digital image analysis and field work. They cover: (a) the urban-fabric factors accounting for green roof distribution; (b) the potential sites for green roof establishment; (c) the macro-scale benefits in terms of suppressing the urban heat island effect, enhancing carbon sequestration and hence reducing carbon footprint, curtailing greenhouse gas emission, and trimming energy consumption; and (d) a game-theory simulation to find the best strategy to promote green roof adoption.

The study's impact includes fourteen scientific papers in high-ranking international journals and presentations at eight international conferences. The innovative studies, key research findings and original contributions to knowledge have helped to elevate the University to the status of a world-class centre for green roof research. The impacts include ascertaining the thermal-energy effects of green roofs in relation to critical factors, including vegetation type, biomass structure, soil moisture content, soil thickness, irrigation regime, individual and combined influences of microclimate parameters, diurnal and seasonal meteorological conditions, and energy conservation. The results also identify plant species with good growth performance for use on green roofs and green walls. A city-wide plan has been developed for green roof installation by districts and land use types.





Besides contributions to science, the study aims squarely at linking the gown to the town by transferring the research-based knowledge to the community for direct adoption and application. A popular-science bilingual book was written to disseminate relevant information and advocate the idea. The most notable knowledge-exchange activity is the Green Roof for School Project. A donation from the Hongkong Bank Foundation permitted fourteen green roofs to be given to local schools to promote teaching and learning about nature and healthy outdoor activities. As a result of the pioneering project, over 50 schools and NGOs have obtained grants from the government's Environment and Conservation Fund to establish their own green roofs. Due to the stimulating ripple effect, other green roofs have since been built using alternative resources. It is anticipated that many more schools and organizations will adopt the innovation in due course to realize the multiplier goal.

Other publicity activities were organized from time to time, including nineteen public lectures and seminars on green roofs to professional bodies, corporations, government departments and the general public, three of which were delivered at the Central Library. In addition, the ideas have been publicized through numerous interviews solicited by newspapers, magazines and television stations. The advocacy has drawn the government's attention. In his 2006 policy address, the Chief Executive included in paragraph 55 the following policy statement: "The Government will

adopt the concept of greening of rooftops whenever practicable in the design of new buildings. We are studying the wider application of the concept with a view to encouraging more projects to adopt this approach".

In comparison with a bare roof, a green roof can reduce heat absorption and transmission with a notable passive cooling effect due to three processes: (a) shading by the green roof; (b) thermal insulation due to the green roof material layers; and (c) heat absorption due to the combination of evaporation and transpiration. The magnitude of cooling varies significantly in response to key extrinsic and intrinsic factors such as weather condition, vegetation type, soil thickness, irrigation regime, and thermal behavior of green roof materials. On average, the surface temperature on the green roof on a hot summer sunny day can be reduced by 15-20°C, as well as air temperature above the green roof by about 3-4°C, and indoor temperature by about 1-2°C, resulting in corresponding air conditioning electricity savings of around 10 percent.

The research projects have been recognized by two awards in 2012 in an open competition organized by the HKSAR Government Development Bureau in conjunction with seven professional institutions. They are: (a) Skyrise Greenery Awards 2012: Merit Award for Schools and NGO Projects: Green Roof for Schools Project; and (b) Skyrise Greenery Awards 2012: Merit Award for Planning and Research Project: Study of Climbing Plant Species for Vertical Greening.

Professor Jim Chi Yung Department of Geography



Case Studies of Impact

Restricting Charcoal to Reduce Suicide Rates

The use of charcoal burning as a suicide method has increased in Hong Kong from 3 percent in 1998 to 25.4 percent in 2003. In view of this increasing trend, The Hong Kong Jockey Club Centre for Suicide Research and Prevention (CSRП) advocated the reduction of access to charcoal as a way to prevent suicides. An exploratory community intervention was implemented at supermarkets and grocery stores to limit the sales of charcoal for 12 months in two districts (one as an intervention and the other as a control district). The two selected districts are comparable in terms of geographical location, demographic, and socioeconomic characteristics. The suicide rate and suicides by charcoal burning of these two districts are higher than other districts in the same area. The intervention district Tuen Mun, Hong Kong, limited the access to charcoal by locking up bags of charcoal in grocery chain stores. In those stores customers needed to ask a shop assistant to unlock the bags if they wanted to make a purchase. The control district sold bags of charcoal as was their usual practice, that is, without any restrictions. This was a double-blind controlled trial, thus, shopkeepers and the public did not have any information regarding this study. The study began on July 1, 2006 and ended on June 30, 2007. The suicide by charcoal burning rate lowered significantly in the intervention district from 4.3 to 2 (Tuen Mun) and this decrease was not observed in the control district (3 and 4.3) (Yip et al., 2010). The overall suicide rate also decreased in the intervention district, but not in the control district. The researchers conclude that this may suggest the restriction of charcoal sales is the main driver behind the decrease in the overall suicide rate in the intervention district. This measure has not prompted people to switch methods, only to increase the barrier in accessing one of the means to suicide. Subsequently, the supermarkets agreed to place suicide crisis hotline numbers on the charcoal packs but did not continue to lock up the product. The Hong Kong Government has so far failed to take any action based upon this research.

The results of the research in Hong Kong were noted in Taiwan, however, where suicide by charcoal burning was the most common suicide method claiming around 180 lives in New Taipei City (2011), a city of 4 million people, in northern Taiwan. In 2012 the New Taipei City government began to require supermarkets and small shops to remove charcoal packets from open shelves and put them in locked cabinets. The CSRП provided support for this project and published a letter to the editor in the most popular newspaper in Taiwan in April 2012 to support the project, when criticism emerged. The CSRП also participated in a Hong Kong-Taiwan Suicide Prevention Forum in September 2012, hosted by the New Taipei City government. The New Taipei City government restrictions on open shelving of charcoal continue to this day. In August, Tainan City government also placed similar restrictions on charcoal selling.

**Professor Paul Yip Siu-fai,
Dr Law Yik Wa, Ms Melissa Chan, and
Dr Chang Shu Sen**

The Hong Kong Jockey Club Centre for
Suicide Research and Prevention

References

- Yip, P S F, Law, C, Fu, K W, Law, Y, Wong, P W C & Xu, Y (2010). Restricting the means of suicide by charcoal burning. *The British Journal of Psychiatry*, 196(3), 241-242.
- Yip, P S F, Law, Y W & Chan, M (2012a). Suicide Prevention in Hong Kong: Opportunities and Challenges, 1 August, 24-25.
- Yip, P S F, Caine, E, Yousuf, S, Chang, S S, Wu, K C & Chen, Y Y (2012b). Means restriction for suicide prevention. *Lancet* 379, 2293-2399.

For comment or feedback on the impact of social science research on the community or examples, please write to: editor.socientist@hku.hk

DEPARTMENTS AND CENTRES



ExCEL3 Project (Excellence in Capacity-building on Entrepreneurship and Leadership for the Third Sector) under the Faculty of Social Sciences of The University of Hong Kong, supported by The Hong Kong Jockey Club was officially launched on May 7, 2012.



The Project aims to provide a platform for cross-sectoral multi-disciplinary networking and interaction between the academia and the 6,000 plus non-profit organizations in the third sector of Hong Kong. Through sharing, training and research, the Project seeks to nurture innovation and entrepreneurship, to strengthen the leadership, management, governance and organizational capacity of the third sector, and to build a platform that brings together philanthropy, foundations, and institutional investors with non-government organizations, as well as the academic community.

PROJECT THEMES

In order to determine the scope of project themes, the Faculty of Social Sciences has conducted sharing sessions and consultations with a large array of NGO organizations to identify the following ten project themes:

- Civil Engagement
- Citizenship
- Enhancement of Self-help Groups
- Impact Investing
- Leadership and Governance
- Philanthropy
- Social Entrepreneurship
- Social Impact Assessment
- Social Innovation
- Sustainability

KNOWLEDGE EXCHANGE AND EXECUTIVE TRAINING

Service Institute

Service Institute provides training workshops or seminars to enhance practical knowledge or skills for front-line professionals.

Executive Institute

Executive Institute focuses on specific knowledge building, best practice sharing and forum for senior executives.

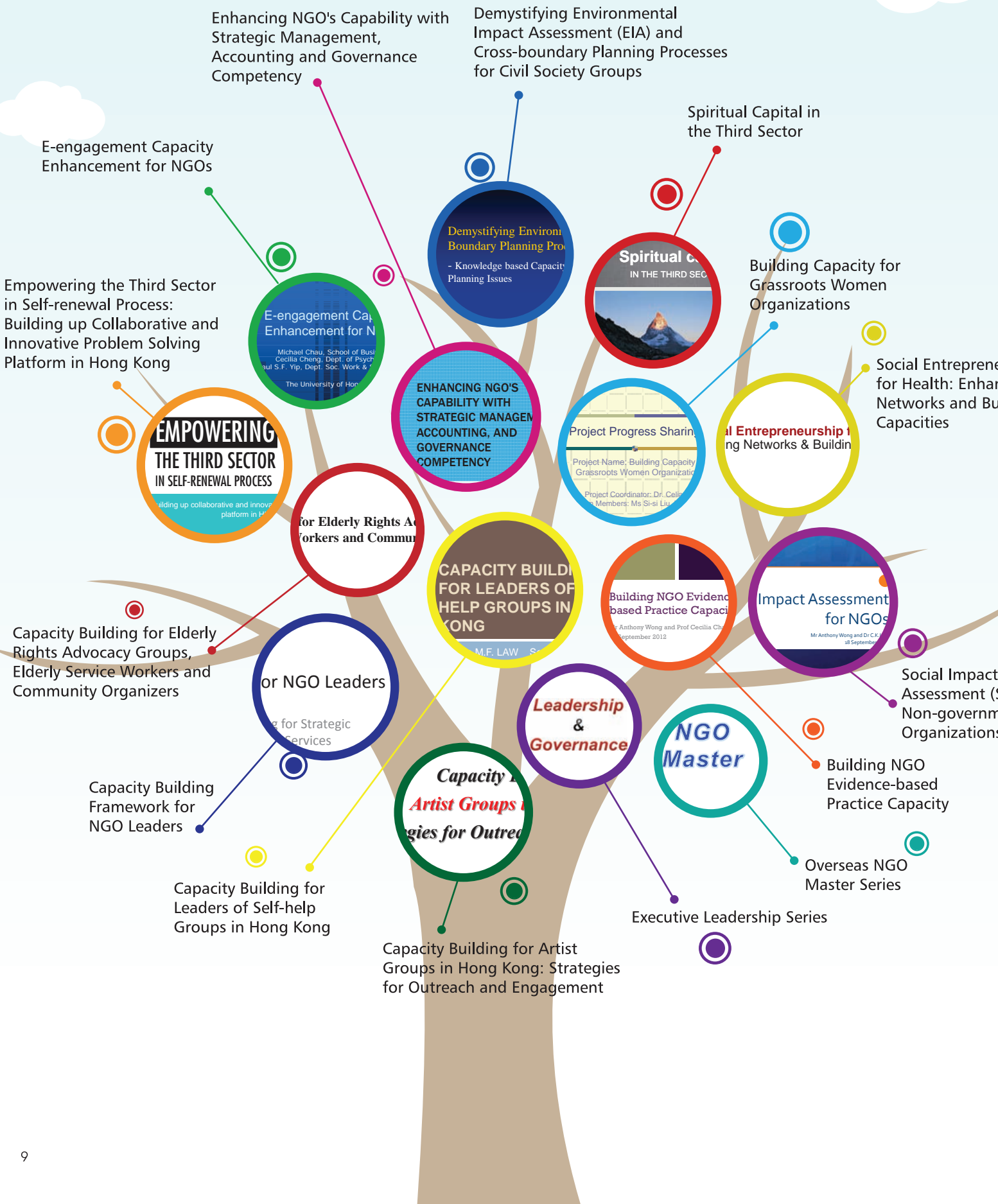
Community Institute

Community Institute enhances knowledge exchange in the form of symposia and seminars for the interested public.

So far, the number of participants of ExCEL3 activities is more than 2,000 people.

NETWORK GROUP PROJECTS

Colleagues from HKU in collaboration with non-profit organizations have developed fifteen network group projects, categorized in accordance with the project themes, into different focuses. The aim of these projects is to enhance the capacity of different NGO sectors systematically through consolidation of local knowledge and best practices, symposia, training workshops and public education (<http://www.socsc.hku.hk/ExCEL3/sip>).



KNOWLEDGE GENERATION

An important component of the ExCEL3 is to build a Case Bank by gathering data from the third sector in Hong Kong, and other region, taking reference of international experiences and developing teaching cases to illustrate key concepts in NGO management, philanthropy, and public policy.

ExCEL3 is also participating in the Hubert Project, conceived and incubated in the Public & Nonprofit Leadership Center at the University of Minnesota's Humphrey School of Public Affairs. The Hubert Project is an open source project that seeks to provide academics and practitioners with high quality multimedia teaching materials in relation to public affairs. The Hong Kong Council of Social Service (HKCSS) has collaborated with ExCEL3 to define a Corporate Social Responsibility (CSR) index based on the ISO 26000 guidelines.

INTERNATIONAL KNOWLEDGE EXCHANGE

The ExCEL3 team will be presenting research findings at the upcoming Association for Research on Nonprofit Organizations and Voluntary Action (ARNOVA) Conference in November in the United States. ExCEL3 is one of the organizers of the Skill-based Workshop for NGO and Social Enterprise of the Social Enterprise Summit 2012.

FUTURE DEVELOPMENT

In the coming years, ExCEL3 will focus more on integrative education, leadership development and an online platform. ExCEL3 is also keeping close track of quality assurance and output evaluation to better gauge the project's output and effectiveness. In order to further reach out and maintain effective dialogues with the third sector, ExCEL3 will launch its e-newsletter in the near future.

ExCEL3 NETWORK

Through the ExCEL3 network, 40 collaborating partners are working closely with the ExCEL3 team on knowledge sharing and generation. Over 170 NGOs are actively participating in ExCEL3 activities; building up an expert hub for capacity building of the Third Sector.

EVENTS HIGHLIGHTS

June 6, 2012

Workshop on Recent Development in Forensic Interviews in Child Sexual Abuse

July 25, 2012

Workshop on the Art and Science of Effective Giving



September 4, 2012

Workshop on the Setup and Operation of Charities: An Outline of the Law

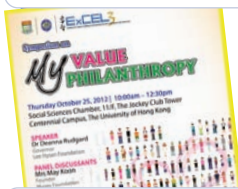
September 21, 2012

Seminar on Is Microfinance Enough to Help the Poor?



October 5, 2012

Symposium on Bereavement: From Treatment to Transformation



October 25, 2012

Symposium on My Value, My Philanthropy

June 8, 2012

Workshop on Social Entrepreneurship and Higher Education: International Trends and Local Challenges

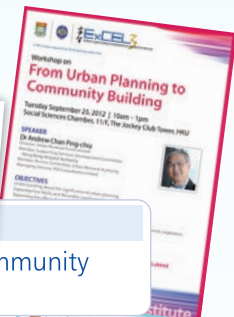
July 26, 2012

Symposium on Next Step to a Better Future: Risks and Opportunities of NGOs in China and Taiwan



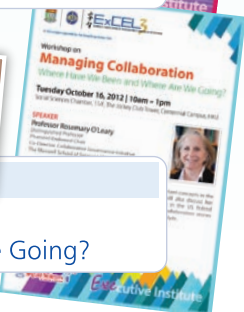
September 25, 2012

Workshop on From Urban Planning to Community Building



October 16, 2012

Workshop on Managing Collaboration: Where Have We Been and Where Are We Going?



October 19, 2012

Symposium on Leadership and Sustainability for NGOs



Leadership
Capacity
Building

Support
for
Mental
Health



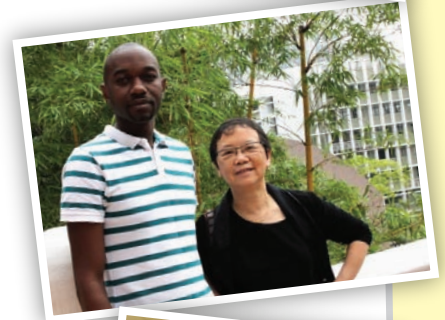
Africa to Asia: An Inspiring Journey against All Odds

I studied in the Journalism and Media Studies Centre (JMSC). I would like to share my story with prospective students from Zambia and Africa. I was the first African from Zambia to successfully graduate with a Master of Journalism degree from the JMSC. As part of my practical training, I interned at Banglanews24, an online news portal headquartered in Dhaka, Bangladesh. This internship was one of a few beyond the Greater China region. I wanted to experience something beyond the boundaries of Hong Kong and China.

After the end of the internship in Bangladesh, which ran from December 2011 to January 2012, I returned to HKU to continue with the rest of my studies. I graduated with a Master of Journalism degree and a Certificate of Specialization in Environmental, Health and Science Journalism. I was the only African resident in Graduate House. Graduate House was an amazing place because of its international mix. This allowed me to interact with residents from different countries, cultures and backgrounds. In April 2012, Vice Chancellor Professor Lap-Chee Tsui at the 15th Prize Presentation Ceremony bestowed me with a commendation pin for Students Winning External Awards 2011–12 for a media award I had won back in Zambia. Since my graduation, two more students from Africa have been enrolled into the 2012/2013 Master of Journalism programme. I was recently welcomed into the University of Hong Kong Alumni Association (HKUAA) in September.

After completing my studies in May, I joined CNNGo, CNN's travel and lifestyle website, where I remained until the end of July. Two days before leaving CNNGo I got an offer from Red Flag Group Limited, an independent corporate governance and compliance firm, providing competitive advantage to Fortune 1000 companies through its range of advanced compliance and anti-corruption advisory services and technology solutions. I work as a Senior Analyst for Due Diligence. My role though not directly linked to journalism but it has some journalistic components like report writing, media research, investigative and economic journalism. I am happy that I was able to adjust and join a team where I can share my "African experience" with my employers. What is even more fulfilling is that Red Flag Group Limited gives its employees a unique platform to drive and guide their own careers.

Mr Sanday Chongo Kabange
MJ (2012)



Psychology Society Ten-year Graduation Gathering

The executive committee of Psychology Society 1999–2000 (Class of 2002) had a reunion in August 2012 to celebrate the decennial graduation. The social sciences graduates have diverged into professions such as accountants, civil servants, marketers, psychologists and teachers.

Psychology Society Executive Committee (Session 1999–2000)





New Adventure in the Blavatnik School

After spending a year in Peking University studying international politics, I was recently admitted to the inaugural Master of Public Policy cohort of the Blavatnik School of Government at the University of Oxford, thanks in part to a recommendation from Professor John P Burns. The Blavatnik School is a newly established public policy school pursuing a vision for better governments, stronger societies, and richer human opportunities at local and international levels. The inaugural 2012 cohort consists of global citizens from Asia, Africa, the Middle East, Europe and the Americas. I have a strong sense of responsibility to strive for intellectual excellence in the new environment, as I am the only student therein from Hong Kong as the Kwok Scholar and as a HKU SocSci Alumnus.

I will begin with a "Major Policy Challenge" module which will focus on natural resource management, and then I will be trained across specialist disciplines – from politics, economics and law, to history, philosophy and ethics, to the natural sciences and medicine. I believe that to fulfill the expectations of the rising population and to tackle the policy challenges of the 21st century, public and corporate leaders should command a high degree of multidisciplinary knowledge and professional excellence. After the year at the Blavatnik School, I will continuously work on my graduate dissertation on global governance at Peking University, while acquiring expert insights into the regional economy and managerial experiences in the private sector. In the foreseeable future, by serving in Asian Development Bank or any similar regional organization, I would like to help facilitate regional integration in Asia-Pacific for diversity, equality and prosperity.

Mr Ayo Chan Yi-ngok (陳一譔先生)
BSocSc (2011)

Raising Social Conscience at the Corporate Level

This is a two year follow up of my 2010 dissertation for the MSocSc in Corporate Environmental Governance "Frontiers, Footprints & The Firm: A Critical Review of Corporate Social Responsibility in Space Tourism". In 2011, I traveled to the US to present the findings and social responsibility concepts at the Earth Institute, Columbia University, followed by visits to space tourism and space development firms across New Mexico, California and Arizona, a panel of the US space tourism regulator, and the Federal Aviation Administration (FAA) in Cape Canaveral, Florida.

In August 2012, the British Interplanetary Society (BIS) nominated me for an Arthur C Clarke award for my work on corporate social responsibility in space.

According to the BIS award nomination, made by Dr Delyse Springett of New Zealand's Massey University, "James aims to raise the social conscience at the corporate level in terms of all four key imperatives of sustainable development: social, economic, environmental and institutional. His work establishes these concepts as central to the entrepreneurial space age now upon us and is of critical importance as space moves into the hands of private enterprise."

Mr James Edward Ockenden
MSocSc (2010)





Social Sciences Society, HKUSU is one of the ten faculty societies in HKU and it represents all the undergraduates in the Faculty of Social Sciences. 44 years since its establishment, the Society has been working hard to foster a sense of consciousness of the local and global communities and promote mutual understanding between members and the Faculty.

The Orientation Series 2012 came to an end in early September. With the support of our members, two orientation camps were successfully organized. Around 300 freshmen joined the inspiring camps. In addition, with the funding from the Faculty, 600 copies of "Snakers" was published. The freshmen guide was popular and our first year students found it beneficial. I would like to take this opportunity to express my gratitude to all the Faculty staff. Without their assistance during the Orientation period, the Society would not have run so smoothly and efficiently.

In the last few months of this session, we are going to organize a Second Hand Book Sale and a Welfare Week for our members as means to promote their general welfare. Books will be collected from senior students or alumni and sold to current students for a cheaper price in the Second Hand Book Sale. During the Welfare Week, student welfare products will be distributed to our members and our Society products including notebook cases, tees, hoodies and jackets will be sold with a discounted price.

Though the up-coming functions are large-scaled and time-consuming, the Society will not forget their role in external affairs. Facing the changing situation in Legislative Council election, plus the controversial National Education issue etc, the Society will keep responding to these social issues and foster a sense of consciousness towards the community among HKU students.

Running a student society is not simple, however, our executive committee are dedicated to serving our members in the last few months of this session. I sincerely hope that our alumni, Faculty staff, students and friends can keep supporting us in the coming future.

Mr Henry Yan Ka-chun (殷嘉駿先生)
Chairman
Social Sciences Society, HKUSU
Session 2012



EVENTS SPOTLIGHT

Seminar on Collaborative Multi-Sector Service Delivery: Toward a Theory of Informal Accountability

March 15, 2012

Professor Barbara S Romzek

Professor of School of Public Affairs and Administration

The University of Kansas, USA



3.23 Civil Referendum Project (PopVote) on the Chief Executive Election in Hong Kong

March 23–24, 2012

Press Conference on Walking Hand-in-Hand – A Qigong Efficacy Study for Cancer Patients and Caregivers

March 28, 2012



Danny D B Ho Lecture and Workshop Series in Holistic Therapy

April 14, 2012, May 5, 12, 19 & 26, 2012

S C Fan Memorial Lecture – The Pattern of Growth and Governance in China and India: A Comparative Assessment in Political Economy

April 17, 2012

Professor Pranab Bardhan

Professor of Economics

The University of California, Berkeley, USA



EVENTS SPOTLIGHT

Global Citizenship Public Lecture – Global Free Expression in the Internet Age: Challenges and Opportunities

April 20, 2012
Professor Timothy Garton Ash
Professor of European Studies
University of Oxford, UK



Making a Difference: 4-day Training on Strengths Model Case Management for People with Severe Mental Disorder

April 24–27, 2012



Care Management and InterRAI Training Course for Hong Kong Christian Service

May 10–July 7, 2012



Symposium on Beyond the East West Divide: Gender, Intimacy and Modernity

May 24–25, 2012



Homecoming Day – Farewell to SWSA K K Leung Office

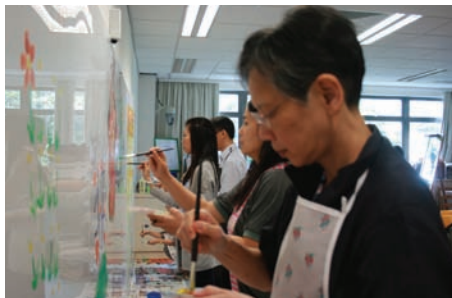
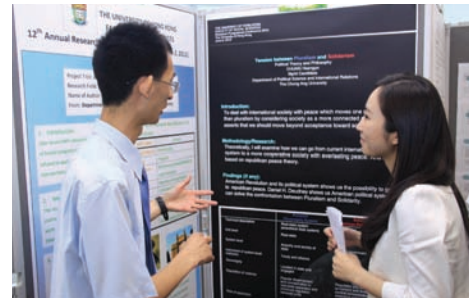
May 25, 2012





**Henry G Leong Foundation
Dementia Care Symposium**
June 1, 2012

**12th Annual Research
Postgraduate Conference**
June 2, 2012



**Symposium and Workshop
on Creativity and the Use of
the Arts in Existential
Psychotherapy**
June 4, 2012

**WAPOR 65th Annual
Conference – The New
World of Public Opinion
Research**
June 14–16, 2012



**HKU Social Sciences
Summer Programme 2012:
Youth, Citizenship and
Cyberspace**
June 25–29, 2012

EVENTS SPOTLIGHT



Symposium on Productive Ageing in Asia
July 6, 2012

Contemporary China Studies Public Lecture – Global Trends and the Prospects for China–US Relations

September 25, 2012

Professor Wang Jisi

Dean, School of International Studies, Peking University

Member, Foreign Policy Advisory Committee

Foreign Ministry of China



Contemporary China Studies Public Lecture – The Resilience of Chinese Communism: Mining the Anyuan Revolutionary Tradition

October 22, 2012

Professor Elizabeth Perry

Henry Rosovsky Professor of Government

Harvard University

Director, Harvard-Yenching Institute, Harvard University

We would like to hear from all alumni, especially those who have not been in contact for some time. We wish to take this opportunity to invite you to share with the Faculty the contact details of local or overseas alumni with whom you are in touch. Please complete and return the following form to the Faculty so that we can keep them informed of the most up-to-date developments and activities of the Faculty and the University.

Fax: 2517 0806/ E-mail: socsc@hku.hk

Part I : Your Information

Name : _____

(Surname)

(Given Name)

Chinese Name : _____

Sex : M/F

Contact Phone No. : _____

E-mail: _____

Year of Graduation: _____

Degree Awarded: _____

Part II: Other Alumni's Information

Name : _____

(Surname)

(Given Name)

Chinese Name : _____

Sex : M/F

Contact Phone No. : _____

E-mail: _____

Correspondence Address: _____

Year of Graduation: _____

Degree Awarded: _____

DONATIONS AND RESEARCH GRANTS (RGC)

Donations (From January to July 2012)

Donor	Recipient	Nature	Amount (HK\$)
RESCULPT (重塑人際關係及個人成長中心)	Centre on Behavioral Health	Activities of the Centre	11,000
Ms Beatrice Y M Mok		Project of "Danny D B Ho Lecture and Workshop Series in Holistic Therapy"	1,800,000
Dr Serena Yang Hsueh-chi	Department of Psychology	HKU-Oxford Exchange Programme	200,000
Bank of China (Hong Kong) Limited		Supporting of "The Chinese Personality at Work Questionnaire"	25,000
Lee Hysan Foundation	HK Institute for Humanities & Social Sciences	Supporting of "Conference on Inter-Asian Connection III"	288,600
D Kim Foundation		Workshop on "The Recent Works in the History of Science, Technology and Medicine"	142,800

Research Grants (Awarded by RGC 2012–13)

Principal Investigator	Department	Project Title	Award (HK\$)
Professor B P Y Loo	Geography	Revisiting the "Three Ds" in Transit-oriented Development (TOD): A People-centred and Placed-based Perspective	676,606
Dr H K Liu	Politics & Public Administration	Explaining Collaborative Service, Network Structure, and Clients' Outcomes of Public Services Providers in Hong Kong and Taipei	590,631
Dr W M Lam		Political Values, Economic Evaluation and Regime Performance in Hong Kong	732,292
Dr T Touloupoulou	Psychology	Genetic Modeling of Schizophrenia Endophenotypes in a Pan-European Twin Sample	762,281
Dr J A Saunders		Integration of Visual Information for Perception of 3D Shape	742,814
Dr C Tseng		Perceptual Grouping in Attentional Search	494,023

DONATIONS AND RESEARCH GRANTS (RGC)

Research Grants (Awarded by RGC 2012–13)

Principal Investigator	Department	Project Title	Award (HK\$)
Professor W G Hayward	Psychology	Recollection and Familiarity for Rotated Objects	340,458
Dr H C C Hui		The Causal Relationships among Sleep, Pessimism, and Optimism	531,900
Dr C M Kam		The Co-development of Executive Function and Emotion Regulation in Chinese Preschoolers: Using Age-Sensitive Longitudinal Measures	1,013,774
Professor T M C Lee		The Neural Effect of Focused-attention Meditation and Loving-kindness Meditation on Attention and Emotion Perception	732,319
Dr L Li		The Role of Optic Flow in the Control of Locomotion Toward a Goal	613,637
Professor C Cheng		Toward a Cultural Approach to the Study of Perceived Control and Psychological Adjustment	577,512
Dr T H Ho	Social Work & Social Administration	A Randomized Controlled Trail on Tai Chi for Patients with Schizophrenia: Effects on Positive and Negative Symptom, Stress Levels, Motor and Memory Deficits, Functioning and Diurnal Cortisol Rhythms	545,818
Dr P S Y Ho		Be A Man!: Conceptualising Hong Kong Chinese Men's Strategies of Sexual Choices	417,786
Dr Y C Wong		Digital Divide Challenges among Children in Low-income Families – The Case of Shanghai	462,088
Professor P S F Yip		Suicide and Employment	628,800
Dr J T Martin	Sociology	Effects of Political Regime on Informal Solidarity: A Comparative Ethnography of Civil Security in Xiamen and Taichung	489,500
Professor K A Laidler		How Young People Obtain Psychoactive Drugs in Hong Kong	467,590

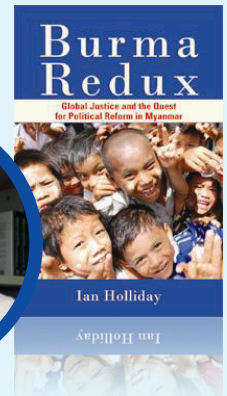
SELECTION OF RECENT PUBLICATIONS (From January to July 2012)

Burma Redux: Global Justice and the Quest for Political Reform in Myanmar

Author: Holliday, I
Publisher: Columbia University Press

A detailed analysis of political reform options in Myanmar, and of what international actors can do to support local initiatives currently unfolding inside the country.

Professor Ian Holliday (何立仁教授)
Department of Politics and Public Administration



Daoism in the Twentieth Century: Between Eternity and Modernity

Authors: Palmer, D A & Liu, X, eds.
Publisher: Berkeley: University of California Press

This pioneering work not only explores the ways in which Daoism was able to adapt and reinvent itself during China's modern era, but sheds new light on how Daoism helped structure the development of Chinese religious culture. The authors also demonstrate Daoism's role as a world religion, particularly in terms of emigration and identity. The book's sophisticated approach transcends previous debates over how to define the term "Daoism" and should help inspire a new wave of research on Chinese religious movements. Paul R Katz, Academia Sinica, Taiwan.

Dr David Palmer (宗樹人博士)
Department of Sociology

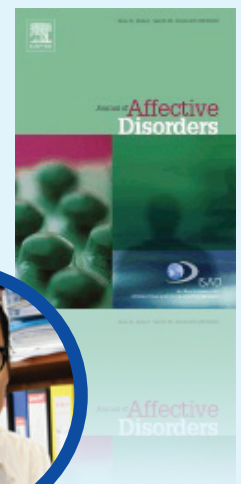


Effectiveness of a Universal School-based Programme for Preventing Depression in Chinese Adolescents: A Quasi-Experimental Pilot Study

Authors: Wong, P W C, Fu, K W, Chan, K Y K, Chan, W S C, Liu, P M Y, Law, Y W & Yip, P S F
Journal: Journal of Affective Disorders

Evidence of the effectiveness, rather than efficacy, of universal school-based programmes for preventing depression among adolescents is limited. This study examined the effectiveness of a universal depression prevention programme, "The Little Prince is Depressed" (LPD), which adopted the cognitive-behavioural model and aimed to reduce depressive symptoms and enhance protective factors of depression among secondary school students in Hong Kong. The LPD programme was successful in building resilience of the students in general and enhancing the cognitive-behavioural skills of students with depressive symptoms.

Dr Paul Wong Wai-ching (黃蔚澄博士)
Department of Social Work and Social Administration

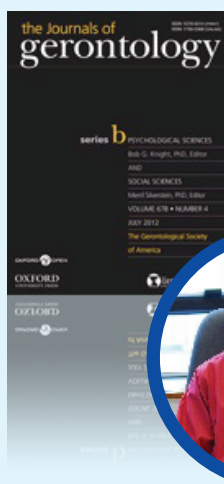


Gambling Behavior and Problems Among Older Adults: A Systematic Review of Empirical Studies

Authors: Tse, S S K, Hong, S L, Wang, C W & Cunningham-Williams, R M
Journal: Journal of Gerontology: Social Sciences

With the rapid aging of the population and the increased availability of gambling facilities over the past three decades, older adults may gamble more and may be increasingly at risk for problem gambling (PG) or pathological gambling disorder (PGD). To facilitate a better understanding of gambling behavior among older adults that will inform preventive strategies, this paper systematically examined empirical studies on issues related to older adults' gambling.

Dr Samson Tse Shu-ki (謝樹基博士)
Department of Social Work and Social Administration



SELECTION OF RECENT PUBLICATIONS (From January to July 2012)



Marketing Death: Culture and the Making of a Life Insurance Market in China

Author: Chan, C S C

Publisher: Oxford University Press USA

How do companies sell life insurance in a country where death is a taboo subject? In *Marketing Death*, Cheri S C Chan explores how and why the life insurance industry has managed to emerge in China, a country with an entrenched cultural stigma against the very topic of death. Drawing on extensive ethnographic fieldwork and engaging with current scholarship, this is the first book to offer a sociological analysis of the emergence of a life insurance market outside of a European or American context. Through in-depth study of the expansion of an industry whose unique “product” – gambling on one’s own sudden death – has always met with a measure of resistance, but never more so than in China, Chan provides a new lens for understanding how modern capitalist enterprises are diffused to regions with disparate cultural traditions. This book has received the Best Book on Globalization Award from the Global Division of the Society for the Study of Social Problem in 2012.

Dr Cheri Chan Shun-ching (陳純菁博士)
Department of Sociology

Means Restriction for Suicide Prevention

Authors: Yip, P S F, Caine, E, Yousuf, S, Chang, S S, Wu, K C C & Chen, Y Y

Journal: The Lancet

Limitation of access to lethal methods used for suicide – so-called means restriction – is an important population strategy for suicide prevention. The present study examines how the spread of information about suicide methods through formal and informal media potentially affects the choices that people make when attempting to kill themselves. We also discuss the challenges associated with implementation of means restriction and whether numbers of deaths by suicide are reduced.

Professor Paul Yip Siu-fai (葉兆輝教授)

The Hong Kong Jockey Club Centre for Suicide Research and Prevention



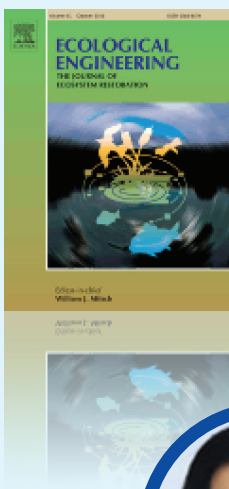
Substrate Moisture Effect on Water Balance and Thermal Regime of a Tropical Extensive Green Roof

Authors: Jim, C Y & Peng, L L H

Journal: Ecological Engineering

Green-roof thermal and hydrological performance has been extensively studied, but the specific effect of substrate moisture has received little attention. This study investigates the substrate moisture effect on evapotranspiration (ET), water balance and subaerial and subsurface temperatures of an extensive tropical green roof. Firstly, three weather types (sunny, cloudy and rainy) in conjunction with three substrate moisture states (wet, moist and dry) generate nine permutations for a scenario analysis. Secondly, the correlations between substrate moisture and thermal performance indicators were explored. The major finding is that substrate moisture is effective in regulating substrate thermal behavior, but less so in enhancing ET and associated cooling. Substrate moisture can notably cool the soil, rockwool and concrete tile on sunny days, and warm them on cloudy and rainy days. In contrast, substrate moisture has limited effect on ET, which is largely dependent on solar radiation, relative humidity and wind speed. The dry substrate on sunny day demonstrates an aberrant behavior of high ET which contradicts with previous studies. This unusual phenomenon is explained by the limited substrate mass effect of the thin extensive green roof. The vegetation surface and air temperatures show little variations between different soil moisture states, and their correlations with substrate moisture are insignificant. The findings provide an additional substrate moisture dimension to enhance the design and management of green roofs with reference to water and thermal behavior.

Professor Jim Chi Yung (詹志勇講座教授)
Department of Geography



Suicide in Asia: Opportunities and Challenges

Authors: Chen, Y Y, Wu, K C C, Yousuf, S & Yip, P S F
Journal: Epidemiologic Reviews

This paper reviews current epidemiologic patterns of suicide, including suicide trends, sociodemographic factors, urban/rural living, suicide methods, sociocultural religious influences, and risk and protective factors in Asia, as well as their implications. The observed epidemiologic distributions of suicides reflect complex interplays among the traditional value/culture system, rapid economic transitions under market globalization, availability/desirability of suicide methods, and sociocultural permission/prohibitions regarding suicides.

Professor Paul Yip Siu-fai (葉兆輝教授)
The Hong Kong Jockey Club Centre for Suicide Research and Prevention



To Get Rich is not only Glorious: Economic Reform and the New Entrepreneurial Party Secretaries

Author: Yan, X
Journal: The China Quarterly

This article examines the profound transformation market reforms have brought to the leadership of the Chinese Communist Party's (CCP) rural grassroots organizations. Focusing on the political rise of private entrepreneurs and other economically successful who recently obtained Village Party Secretary appointments in a North China county, this article explores their differing promotion channel, power base, political resource and motivation to take up the CCP's grassroots leadership position. It demonstrates that the varieties among the new entrepreneurial party secretaries — from large factory owners to de facto farm managers — shaped the network resource, factional affiliation and socio-political capital they rely upon to exercise the newly attained power. It also shows the crucial role played by community-based endogenous forces in transmitting the power of economic liberalization into dynamics for the reshuffling of the communist party leadership at the grassroots level.

Dr Yan Xiaojun (閻小駿博士)
Department of Politics and Public Administration



The Effects of Psychotherapy on Psychological Well-Being and Diurnal Cortisol Patterns in Breast Cancer Survivors

Authors: Hsiao, F H, Jow, G M, Kuo, W H, Chang, K J,
Liu, Y F, Ho, R T H, Ng, S M, Chan, C L W, Lai, Y M & Chen, Y T
Journal: Psychotherapy and Psychosomatics

This study suggests that BMS group therapy likely contributed to enhancing an active search for meaning in life toward more opportunities for personal growth and to maintaining stable cortisol responses to everyday life stress for breast cancer survivors.

Professor Cecilia Chan Lai-wan (陳麗雲教授)
Centre on Behavioral Health



CONGRATULATIONS

Alumni

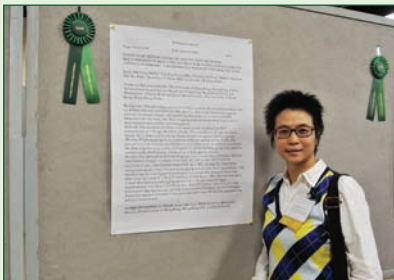
Honours



Mr John Chan Koon-chung
(陳冠中先生)
Honorary University Fellowship

Students

Awards



Society of Behavioral Medicine's 33rd Annual Meeting and Scientific Sessions **Meritorious Student Abstract Award**

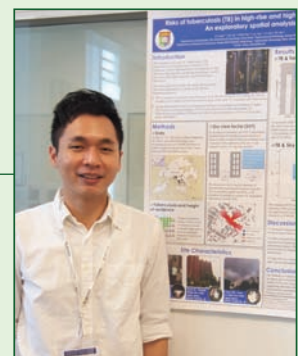
It's my great pleasure and honour to be awarded at Society of Behavioral Medicine. I am very happy to see Chinese culture may be recognized in the international conference. I feel grateful to my supervisors Professor Cecilia Chan and Dr Rainbow Ho for their kind guidance and tremendous support in my PhD study, and also thank Dr Jonathan Sham, Dr L P Yuen, staff in Centre on Behavioral Health, volunteers and all research participants.

Miss Jessie Chan Suet-mui (陳雪梅小姐)
PhD Candidate (Social Work and Social Administration)

Elsevier **Best Student Poster Award**

I feel honoured to have my poster recognized by this international conference. To condense the whole research into a poster and to share with other researchers is a challenging yet exciting experience. I am deeply indebted to my supervisor Dr Lai Poh Chin for her guidance in this research.

Mr Low Chien Tat (劉振達先生)
PhD Candidate (Geography)



2012 Annual Vision Sciences Society Meeting **The 2012 Elsevier/Vision Research Travel Award**

With the award, I was able to travel to Florida, USA to exchange research knowledge with researchers from all over the world in one of the world's largest conferences on vision research. It was a great experience to have met new friends on the way too!

Mr Ricky Tso Van-yip (曹宏業先生)
MPhil (Psychology)



Academic Staff

Honours



Dr Sandra Tsang Kit-man
(曾潔雯博士)

Department of Social Work and
Social Administration
Appointed as Justice of the Peace, JP



Dr Cheris Chan Shun-ching
(陳純菁博士)

Department of Sociology

Prestigious Fellowship in Humanities and Social Sciences
University Grants Committee



Professor David Zhang Dian
(章典教授)

Department of Geography

Awards



Dr Janet Hsiao Hui-wen
(蕭惠文博士)

Department of Psychology

The Best Poster Prize

Hong Kong Psychological Society Annual Conference 2012



Professor Jim Chi Yung
(詹志勇講座教授)

Department of Geography

Skyrise Greenery Awards 2012: Merit Awards for
Schools and NGO Projects: Green Roof for Schools Project

**Planning / Research Projects: Study of Climbing Plant Species for
Application of Vertical Greening in DSD Facilities**

Development Bureau, The Government of HKSAR



Professor George Lin Chu-sheng
(林初昇講座教授)

Department of Geography

China Geography Outstanding Service Award

China Geography Specialty Group

The Association of American Geographers

NSFC Competitive Research Grant – Basic Research (as PI)

National Science Foundation of China



Dr Ng Cho Nam
(吳祖南博士)

Department of Geography

Certificate of Merit

Journal of Landscape and Urban Planning



Dr David Palmer
(宗樹人博士)

Department of Sociology

2011 PROSE Award

The PROSE Awards for Best Book on
Theology & Religious Studies –
The Religious Question in Modern China

CONGRATULATIONS

Academic Staff

Promotions



Professor Tatia Lee Mei-chun
(李涓珍講座教授)
Chair Professor
Department of Psychology



Professor George Lin Chu-sheng
(林初昇講座教授)
Chair Professor
Department of Geography



Professor Eliza Lee Wing-yee
(李詠怡教授)
Professor
Department of Politics and
Public Administration



Dr Edward Chan Ko-ling
(陳高凌博士)
Associate Professor
Department of Social Work and
Social Administration



Dr Cheris Chan Shun-ching
(陳純菁博士)
Associate Professor
Department of Sociology



Dr Amy Chow Yin-man
(周燕雯博士)
Associate Professor
Department of Social Work
and Social Administration



Dr Travis Kong Shiu-ki
(江紹祺博士)
Associate Professor
Department of Sociology



Dr Li Li
(李黎博士)
Associate Professor
Department of Psychology



Dr Uwe Steinhoff
(石樂凡博士)
Associate Professor
Department of Politics and
Public Administration

Academic Staff

New Appointments



Dr Christian Chan Shaunlyn
(陳濟靈博士)
Assistant Professor
Department of Psychology



Dr Wendy Chen Yan
(陳艷博士)
Assistant Professor
Department of Geography



Dr Anna Choi Wai-man
(蔡惠敏博士)
Assistant Professor
Department of Social Work
and Social Administration



Dr Barbara Lo Chuen-yee
(羅傳意博士)
Assistant Professor
Department of Psychology



Dr Chang Shu Sen
(張書森博士)
Research Assistant Professor
The Hong Kong Jockey Club
Centre for Suicide Research
and Prevention



Dr Tracy Kwan Tak-ching
(關德貞博士)
Post-doctoral Fellow
Centre on Behavioral Health



Miss Chen Jing
(陳靜小姐)
Post-doctoral Fellow
Department of Psychology



Dr Alexander Montasem
Post-doctoral Fellow
Department of Psychology



Dr Frank Wong Ho-ting
(黃浩霆博士)
Post-doctoral Fellow
Department of Geography



Dr Allen Zhang Hao
(張浩博士)
Post-doctoral Fellow
Department of Geography

FORTHCOMING EVENTS

November

Danny D B Ho Lecture and Workshops Series in Holistic Therapy – Symposium on Creativity and Energy as the Sources of Healing

Date: Nov 16, 2012

Venue: Loke Yew Hall, Main Building, HKU

Contact: Ms Amy Choi

(Tel: 2831 5163; Email: amychoi@hku.hk;

Website: <http://cbh.hku.hk/>)

Danny D B Ho Lecture and Workshops Series in Holistic Therapy – Workshop on Art Therapy by Dr Jordan Potash and Workshop on Chakra and Mind Body Health by Ms Venus Wong

Date: Nov 16, 2012

Venue: Centre on Behavioral Health, HKU

Contact: Ms Amy Choi

(Tel: 2831 5163; Email: amychoi@hku.hk;

Website: <http://cbh.hku.hk/>)

Student Prize Presentation Ceremony 2012 傑出學生頒獎典禮

Date: Nov 17, 2012

Venue: Loke Yew Hall, Main Building, HKU

Contact: Miss Nikki Wong

(Tel: 3917 1224; Email: nhywong@hku.hk;

Website: <http://www.socsc.hku.hk/ppc/2012/>)

Contemporary China Studies Public Lecture – Paying for China's Urbanization: Challenges of Municipal Finance in the 21st Century

Speaker: Professor Christine Wong

Date: Nov 19, 2012

Venue: Social Sciences Chamber, 11/F,

The Jockey Club Tower, Centennial Campus, HKU

Contact: Ms Crystal So

(Tel: 3917 1226; Email: crystalso@hku.hk;

Website: <http://www.socsc.hku.hk/ccspl/cwong>)

Workshop on Do All Human Beings Have Equal Moral Worth? For and Against 'Basic Equality' and the Principle of Equal Respect and Concern

Date: Nov 22 – 24, 2012

Venue: Room 1130, 11/F, The Jockey Club Tower, Centennial Campus, HKU

Contact: Ms May Yim

(Tel: 3917 4926; Email: mayyim@hku.hk)

December

Contemporary China Studies Public Lecture – Can China's Urbanization Save the World

Speaker: Professor Kam Wing Chan

Date: Dec 3, 2012

Venue: Social Sciences Chamber, 11/F,

The Jockey Club Tower, Centennial Campus, HKU

Contact: Ms Crystal So

(Tel: 3917 1226; Email: crystalso@hku.hk;

Website: <http://www.socsc.hku.hk/ccspl/>)



Date: Dec 6 – 8, 2012

Venue: CPD-LG08-09, Centennial Campus, HKU

Contact: Ms Ariel Poon

(Tel: 3917 2099; Email: youthcounselling@socwork.hku.hk;

Website: <http://www.socialwork.hku.hk/youthcounselling>)

ExCEL3 Workshop on Crisis Management and Media Handling for NGOs

Date: Dec 7, 2012

Venue: Social Sciences Chamber, 11/F,

The Jockey Club Tower, Centennial Campus, HKU

Contact: Mr Alan Tang

(Tel: 3917 1260; Email: alantstl@hku.hk)



Date: Dec 16, 2012

Venue: Hong Kong Convention and Exhibition Centre, Wan Chai

Contact: Miss Nikki Wong

(Tel: 3917 1224; Email: nhywong@hku.hk;

Website: <http://www.socsc.hku.hk/grad/2012/>)

Sociologist

is published twice a year by the Faculty of Social Sciences, The University of Hong Kong. Electronic copies of *Sociologist* are available on the internet at www.socsc.hku.hk.

For hard copies of *Sociologist*, please e-mail us at socsc@hku.hk.

The Faculty welcomes any form of contribution to *Sociologist*.

Editor-in-Chief

Professor John P Burns, Dean

(卜約翰教授)

Editorial Assistants

Mrs Amy Tsang (曾梁惠慈女士)

Mr Tommy Fan (范溢雄先生)

Miss Nikki Wong (黃曉怡小姐)

Ms Florence Luk (陸可盈女士)

Ms Crystal So (蘇潔貞女士)

Graphic Design

Mr Harold Tsang (曾可文先生)

The Faculty of Social Sciences

reserves the right to publish and edit any material submitted for publication. Views expressed in *Sociologist* by contributors do not necessarily represent those of the Faculty or the University.

Faculty of Social Sciences

11/F, The Jockey Club Tower

Centennial Campus

The University of Hong Kong

Pokfulam Road, Hong Kong

Telephone: (852) 3917 1234/ 3917 1235

Fax: (852) 2517 0806

E-mail: socsc@hku.hk

Website: www.socsc.hku.hk

All rights reserved.

Fall 2012

